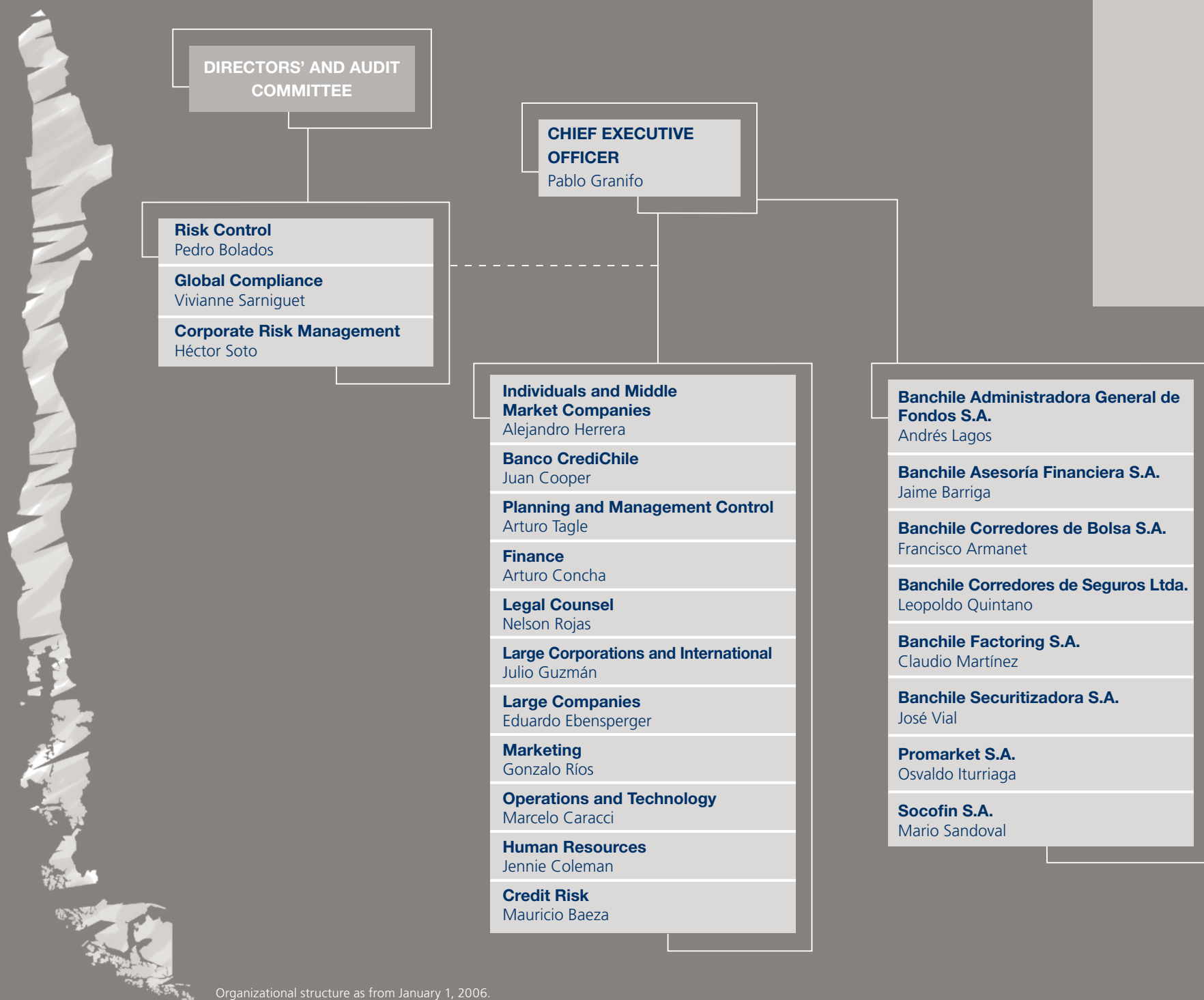


our management



Organizational structure as from January 1, 2006.

The Credit Risk Division was previously managed by Luis Felipe Bravo.

The Restructuring and Special Businesses Division, managed by Alicia Sandoval, was merged into the Credit Risk Division on January 1, 2006.

During 2005, Banchile Factoring was managed by Eduardo Ebensperger and Andrés Charme, successively.